

**Mrs. Brunner**  
 maranda.brunner@elps.us  
**TEAM 7A**

# Science



**Grade 7**

2016/2017 Edition

**Room 227**

## Mrs. Brunner's Schedule

<b>1<sup>st</sup> hour</b>	Planning	8:05 – 8:59
<b>2<sup>nd</sup> hour</b>	Science-7	9:04 – 9:58
<b>3<sup>rd</sup> hour</b>	Science-7	10:03 – 10:57
<b>4<sup>th</sup> hour</b>	Science-7	11:01 – 11:55
	<b>Lunch</b>	11:55 – 12:30
	<b>TrojanTime</b>	12:35 – 12:55
<b>5<sup>th</sup> hour</b>	Science-7	1:00 – 1:54
<b>6<sup>th</sup> hour</b>	Science-7	1:58-2:52

## What's In Store This Year in Science-Grade 7!

Welcome to 7<sup>th</sup> grade and the amazing world of science! Science is all around us, from the air we breathe to the water that we drink. Therefore, the purpose of science is to learn about the world around and within us. WOW, that's a big topic as well as an exciting one. I'm looking forward to sharing a fun and memorable year with you!

This year we will be covering many topics including scientific inquiry, cells, energy, chemistry, weather, and much more. An array of methods will be used to explore these topics including labs, demonstrations, discussion, projects, audio-visual aids, computer usage, group activities, lecture, and note-taking.

## Materials Needed

- ❖ Three-ring binder with notebook paper
- ❖ Planner
- ❖ Pencil or pen
- ❖ All work due that day
- ❖ Positive attitude
- ❖ Textbook, when applicable



## Calendar of Course Objectives

This course is aligned with the state standards (GLCEs), which can be accessed on the Michigan Department of Education Website. Below is the tentative outline for the year.

### First Semester

#### UNIT 1 – Science and Engineering Skills

- **Science Safety and Measuring:** The Science Lab, Lab Rules, Lab Equipment; Measurements in Science
- **Intro. To Engineering:** Engineering Design Process
- **Intro. To Scientific Inquiry:** Scientific Method

#### UNIT 2 – The Nonliving Earth

- **Chemistry and Matter:** Intro. to Matter; Classification of Matter; Atoms; Periodic Table; Changes in Matter
- **Energy and Waves:** Energy; Waves; Sound
- **Weather and the Atmosphere:** The Atmosphere; Weather Elements; Severe Weather; Weather vs. Climate

Semester Evaluation – Chemistry and Matter

### Second Semester

#### UNIT 2 – Continued...

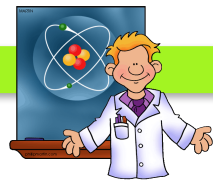
#### UNIT 3 – The Living Earth

- **Study of Life:** Characteristics of Life, Classification of Life
- **Cells and Organization:** Cells; Microscopes; Organization of Life, Macromolecules
- **Cell Energetics:** Macromolecules cont.; Photosynthesis; Cellular Respiration
- **Growth, Development, and Reproduction:** Cellular Transport; Growth and Development; Asexual vs Sexual Reproduction; Human Reproduction
- **DNA and Genetics:** DNA Structure; Heredity and Genetics; Adaptations

Semester Evaluation – The Living Earth

#### UNIT 4 (if time allows) – Human Interactions and Impact





## Daily Expectations

### What Should I Bring?

- ❖ Science Binder
- ❖ Planner (you will NOT be allowed to use the restroom without your planner)
- ❖ Textbook, when applicable
- ❖ Pencil or pen
- ❖ All work due that day
- ❖ Positive Attitude

### Start-of-Class

Before the bell rings, you should

- ❖ Have all materials needed for the day
- ❖ Be seated in assigned seat
- ❖ Be at a required Voice level
- ❖ Be working on the day's warm-up



### Classwork

Classwork is due at the beginning of class on the assigned due date. During class, you are expected to participate and put forth full effort. You can show that you are putting forth your full effort by:

- ❖ Coming to class prepared
- ❖ Following all expectations
- ❖ Showing curiosity by asking questions
- ❖ Remaining interested and focused
- ❖ Committing to the task; even if it is difficult

## Making the Grade: How Do You Measure Up?



### Grade Calculation

Grades will be based on a straight point system. Your percentage can be calculated by taking the total number of points earned and dividing by the total point available. Individual assignment grades are based on the percentage scale to the right. If you genuinely attempt an entire assignment, you cannot earn less than a 50%. Grades will be posted regularly on PowerSchool. Below you can find a table that outlines behaviors typically exhibited by students who earn a given grade.

### Citizenship Grades

MacDonald Middle School values respect, responsibility, and relationships. A citizenship grade is rewarded based on the student's ability to show MacDonald's core values in a course of study.

**G- Good:** Student is on time with materials, participates, and displays no disruptive behaviors

**S- Satisfactory:** Student is on time with material; little to no disruptive behavior

**U- Unsatisfactory:** Student arrives to class late and/or missing materials; disruptive behavior affects learning community

### Grading Scale

<b>A</b>	<b>93 – 100 %</b>
<b>A-</b>	<b>90 – 92%</b>
<b>B+</b>	<b>87 – 89%</b>
<b>B</b>	<b>83 – 86%</b>
<b>B-</b>	<b>80 – 82%</b>
<b>C+</b>	<b>77 – 79%</b>
<b>C</b>	<b>73 – 76%</b>
<b>C-</b>	<b>70 – 72%</b>
<b>D+</b>	<b>67 – 69%</b>
<b>D</b>	<b>63 – 66%</b>
<b>D-</b>	<b>60 – 62%</b>
<b>F</b>	<b>59 or below</b>

<b>A, A-</b>	Student is prepared every day with all materials; student is organized; assignments turned in 100% complete and on time; assignments are 90-100% accurate; assignments are detailed and provide many supportive details; student is rarely absent; student consistently puts forth 100% effort; student consistently asks questions; student contributes to all aspects of the course; student vigorously studies for exams, tests, and quizzes
<b>B+, B, B-</b>	Student is prepared every day with all materials; assignments are almost always turned in 100% complete and on time; assignments are detailed; student is occasionally absent; student puts forth effort; student occasionally asks questions; student contributes to group and partner work, but rarely to group discussions; student studies for exams, tests, and quizzes
<b>C+, C, C-</b>	Student comes prepared most of the time; some assignments are missing and/or are turned in late; assignments are mostly partially completed; student is occasionally absent; student occasionally contributes to aspects of the course; student puts forth 70% effort; student studies a little for exams, tests, and quizzes
<b>Ds &amp; Es</b>	Student rarely comes prepared; student rarely contributes; many, if not most, assignments are missing; student is oftentimes absent; student does not study; student is not organized
<b>Zero Points</b>	Student plagiarized and/or cheated on an assignment or assessment; assignment or assessment missing



# Assessing Your Skills

Assessment and feedback is necessary in helping you learn. Assessment tells you and me how well you are learning. Assessments will be graded, unless otherwise noted. Below are the forms of assessment you should expect this year. I encourage you to continuously look over the material on a nightly basis. Not only will it help you on the quizzes and tests, but it will also help you with in-class assignments and labs.

## Exams

You will have at least 1 semester exam, possibly 2. The first will test you on your understanding of the content from the first and second quarters. The second exam will test you on the content from the third and fourth quarters. Often these exams come in the form of a project.

## Tests & Quizzes

Questions on tests and quizzes will come from material learned in a given unit or subunit. You will be given a study guide before a test is administered. If you are absent for a test you will be required to set up a date to take the test outside of class time. If you are present when a test/quiz is announced you are expected to take the test/quiz on the announced day regardless if you are absent the day before.

## Checks for Understanding

In order to gauge my instruction, I will frequently check to see how well you understand the information you are learning. These “checks for understanding: will make surprise appearances and will be **ungraded**. This form of assessment will not only give me feedback, but you, too. You can use these checks for understanding to help you study for upcoming assessments.

## Labs and Projects

Labs and projects give you a chance to experience the science first hand. They are great ways to assess your skills and the content you are learning. Labs must be recorded properly and made up outside of class if you are absent, unless determined otherwise by the teacher.

## Additional Information

### Absences

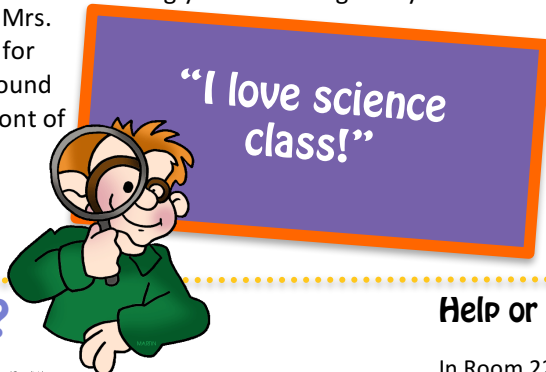
Your attendance is crucial to your success, but we understand that absences may occur. In the event of an absence, you will have **one week to make up any missed work**. Labs and tests **MUST** be made up outside of school by making an appointment with Mrs. Brunner. You are responsible for getting your missing work – found near the whiteboard at the front of the classroom. It can also be downloaded from the class website.

### Your Parents/Guardians

Just like me, your family wants you to do well in school, no matter the class! If your parent/guardian is every concerned about your science work or the class in general, please encourage them to contact me. We will all work together to support you during your seventh grade year!

### “I Forgot To Do My Work”

I encourage you to use your planner every day and to check the class website for upcoming assignments. I do understand that sometimes we simply forget, so you will have the opportunity to complete a responsibility sheet as “insurance”. A responsibility sheet will save you from a **deduction of 35%** off your earned points on any assignment if late. You get 2 responsibility sheets per quarter.



## Looking for Help?

### Class Website:

**brunnerscience.weebly.com**

On this webpage you can find this syllabus, a tentative yearly schedule, daily agendas, assignments to download, a class calendar, and information about Mrs. Brunner/ how to contact her.

You can also find the class webpage by doing the following:

- ❖ Go to [elps.us](http://elps.us)
- ❖ Click on ‘MacDonald Middle School’ under *Our Schools*
- ❖ Click on ‘Staff Directory’ under *About Us*
- ❖ Click on ‘Maranda Brunner’ under *7<sup>th</sup> grade*

## Help or Catching Up With Assignments

In Room 227 with Mrs. Brunner:

- ❖ After school on Wednesdays by appointment.
- ❖ By appointment if Wednesdays do not work.

In the media center with others:

- ❖ Wednesday and Thursday after school until 4:10 pm. (late bus available)

**Comprehending the Grade 7 Science Syllabus**

*Directions: Complete the tasks below to show your understanding of seventh grade science expectations.*

1. What subject area are you most interested in learning about this year? In which semester will this be taught?
2. What should you bring to class each day?
3. In general, when is classwork due?
4. Before the start of class, your table partner is talking with a friend across the classroom. Is he or she prepared for the start of class? Why or why not? How can your table partner show that he or she is ready to start class?
5. What grade would the student explained below most likely earn?
  - a. Meghan comes prepared every day to class with all materials. Her assignments are turned in on time, yet she is occasionally absent. Meghan contributes to group work, but is very quiet during whole class discussions.
6. What is a responsibility sheet? Why is it important to complete one if you forget to turn in an assignment?
7. Jordan turned in a 10-point assignment two days late, and did not complete a responsibility sheet. Jordan earned 8 points on the assignment. What will Jordan's score be after the late work deduction is made? What letter grade has Jordan earned?
  - a. HINT: Take Jordan's earned points. Multiple that by 35%. Subtract this number from Jordan's earned points.
8. You are feeling confused about the analysis questions on a lab assignment. When can you see your teacher for help?
9. If you are absent, how long do you have to make up your missing work?
10. What is the url for the class website? If you have internet access, please go to the website and use the contact form to send a message to Mrs. Brunner.

## Parent/Guardian Questionnaire

Homework

First and Last Name of Student: \_\_\_\_\_ Class Hour: \_\_\_\_\_

Dear Parent/Guardian,

In order to better understand your child, please answer the following questions and return this syllabus with your child no later than \_\_\_\_\_. Your student will earn 5 points credit for your participation.

1. After reviewing the content within this document, in which areas do you believe your child will excel? Please explain.

2. After reviewing the content within this document, in which areas do you believe your child will struggle? Please explain.

*Thank you for your honest feedback! I look forward to working with you!*